

Harp

Route 113

from *Pokémon Ruby, Sapphire, and Emerald*

Go Ichinose
ed. Tré29

$\text{♩} = 84$

The musical score for 'The Rose Tree' is presented in two systems. The first system shows the beginning of the piece in G major (one sharp) and 12/8 time. The treble staff starts with a quarter rest, followed by a series of eighth and sixteenth notes. The bass staff begins with a piano (*p*) dynamic and features a steady eighth-note accompaniment. The second system continues the melody in the treble staff, which is marked with a repeat sign at the end.

3

A musical score for the song 'The Rose Tree'. It features a treble and bass staff with a key signature of two sharps (F# and C#). The melody is written in the treble staff, and the bass line is in the bass staff. The music is in 4/4 time and consists of two measures. The melody starts on G4, goes up to A4, then B4, and continues with eighth and sixteenth notes. The bass line starts on G3, goes up to A3, then B3, and continues with eighth and sixteenth notes. The score is written in a simple, clear style with black ink on a white background.

5

A musical score for the song 'The Rose Tree'. It features a treble and bass staff with a key signature of two sharps (F# and C#). The melody is written in the treble staff, and the bass line is in the bass staff. The music is in 4/4 time and consists of two measures. The melody is a simple, catchy tune, and the bass line provides a steady accompaniment.

7

A musical score for the song 'The Rose Tree'. It features a treble and bass staff with a key signature of one sharp (F#) and a common time signature (C). The melody is written in the treble staff, and the bass line is in the bass staff. The music consists of two measures, each containing a series of eighth and sixteenth notes.

9

The musical score for 'The Rose Tree' is presented in two systems. The first system contains the first two measures of the melody and accompaniment. The second system contains the next two measures, including a crescendo leading to a mezzo-forte (mp) dynamic. The melody is written in treble clef with a key signature of one sharp (F#) and a 2/4 time signature. The accompaniment is written in bass clef with the same key signature and time signature. The melody consists of eighth and sixteenth notes, while the accompaniment features a steady eighth-note pattern. The piece concludes with a final measure in the second system.

11

mp

13

mf

14

f

15

p

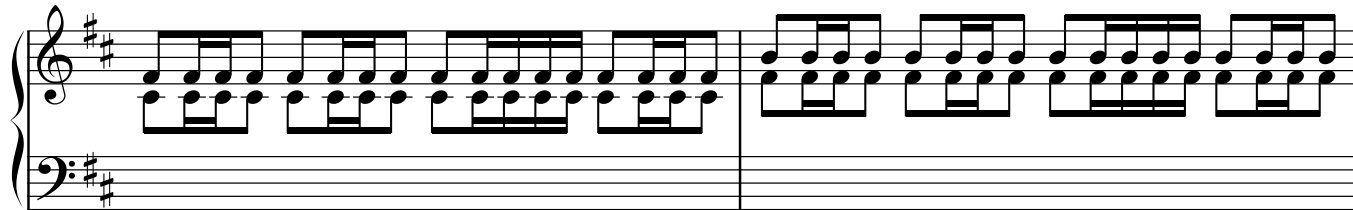
16

p

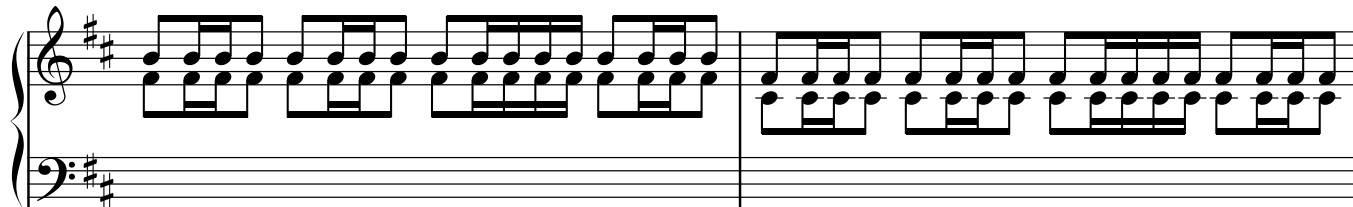
18

p

20



22



24

